

NERF RAILS

P/N: TF030701, TF030702



PARTS

REF	QTY	PART DESCRIPTION
1	1	Driver's Side Nerf Rail
2	1	Passenger's Side Nerf Rail
3	3	Driver's Side Lower Mount Bracket
4	1	Pass. Side Lower Mount Bracket
5	1	Accent Panel Set (6 pieces)
6	8	L Bolt with Flat Washer and Lock Nut
7	8	Spacer
8	16	#8-32 x 1/2" Button Socket Cap Screw
9	6	5.16"-18 x 1" Flat Socket Cap Screw

TOOLS REQUIRED

- Wrench or Socket Set
- T40 Screwdriver
- Allen Wrench Set



Hardware for Driver's Side Nerf Rail Pictured

BEFORE YOU BEGIN

If you do not feel comfortable installing your **Thumper Fab** Bumper please see your nearest **Polaris® Dealer** for installation.

INSTALLATION INSTRUCTIONS

1. Remove the stock T40 bolts (seen below in green) using a T-40 screwdriver. There are 4 of these bolts on each side of the General.



2. Slide the L bolts into the holes next to where you removed the T40 screws. Make note of the hole on the non threaded end of the L bolt.



3. Slide bracket over the threaded end of the L bolts for the lower 3 holes on each side. Run the T-40 bolts through the hole into the bracket, then into the same hole you removed them from. Take care to note that the hole in the non threaded end of the L Bolt should be lined up with these holes. The T40 bolts will run from the bracket, through the original hole in the General, then into the hole in the L bolt. Once this has been done, use a flat washer and lock nut on the threaded end of the L Bolt to further secure bracket. The nut should take a 3/4" wrench or socket.



INSTALLATION INSTRUCTIONS - CONTINUED

4. For the upper mount hole on the rear end of the General on either side, there is no bracket, but secure the L bolt using the T-40 bolt in the same manor as in step 3.



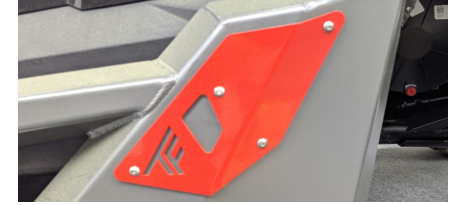
5. Position nerf rails on the side of the General. Slide the upper rear mount bracket that is affixed to the nerf rail over the rear L bolt and secure with flat washer and lock nut.



6. To finish securing Nerf Rails, run the flat socket cap screws from the holes on the bottom of the nerf rails into the weld nuts on the lower mount brackets. Use a 3/16" Allen Wrench.



7. Mount the accent panels using the #8-32 x 1/2" button head screws. Use a 3/32" allen wrench.



NOTES FOR GENERAL 2 SEAT INSTALLATION

For the 2 Seat version of the Nerf Rails, installation is fundamentally the same. However, there will only be two lower mount brackets on each side, and only the logo cover plate and one step plate per side.

